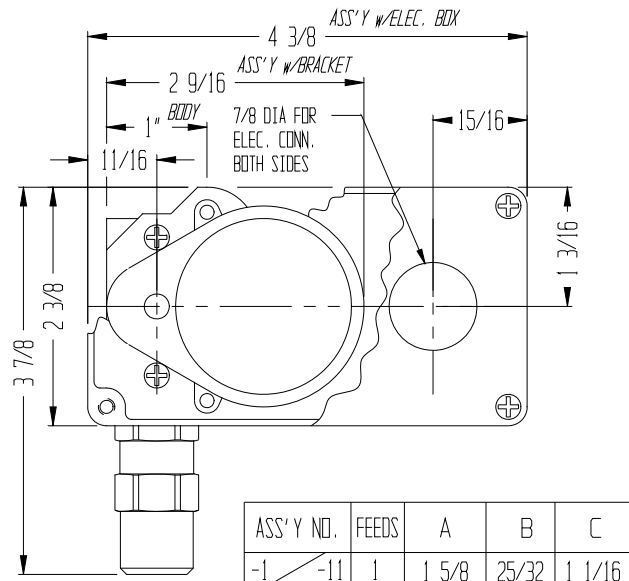


PROPERTY OF OIL-RITE CORPORATION

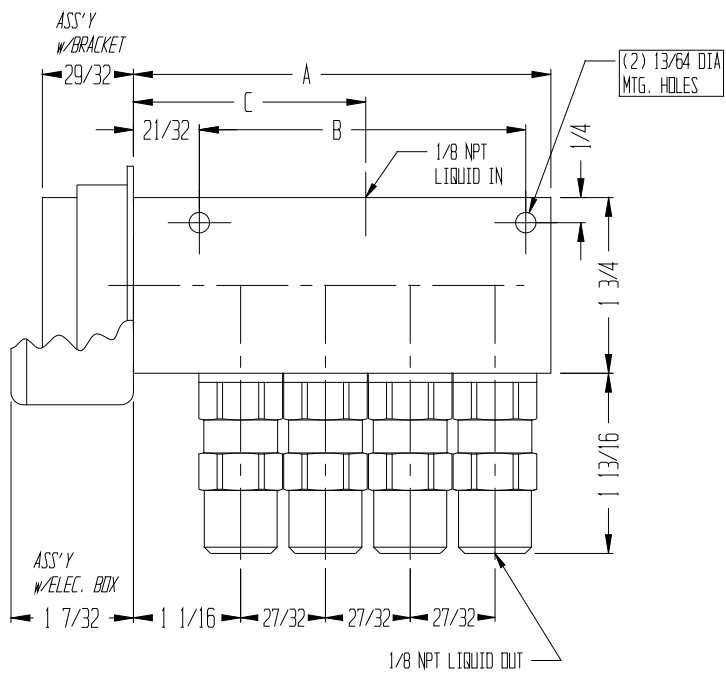
This print is loaned only and subject to return upon demand, and upon the express condition that it is not to be reproduced or copied, or information from it furnished to others, or to be used in any way detrimental to the interests of Oil-Rite Corporation.

REV	CO NO	CHANGE	BY	DATE	APVD
A	13158	ADDED "A-5930..." TO REF NOTES	SD	07-31-00	MW
B	13492	REMOVED ASS'Y -6 & ASSOC. NOTES	SD	01-08-02	MW
-	-	-	-	-	-



ASS'Y NO.	FEEDS	A	B	C
-1 / -11	1	1 5/8	25/32	1 1/16
-2 / -12	2	2 15/32	1 9/16	1 1/2
-3 / -13	3	3 5/16	2 3/8	1 15/16
-4 / -14	4	4 5/32	3 3/16	2 5/16

ASS'Y NO.
B-3429



I) INSTALLATION

A. Mounting:

Two 13/64 dia mounting holes thru body. Secure to flat surface. Pump may be mounted in any position (such as up side down).

B. Electrical and Liquid Connections:

1. Connect electrical leads to power source.
2. Attach suction line to 1/8 N.P.T. liquid inlet.
3. Attach discharge lines to 1/8 N.P.T. liquid outlets.

II) OPERATION:

A. Start-Up Procedure:

1. Fill reservoir with liquid to be pumped.
2. Pump is ready to operate.
3. For faster start-up, prefill lines or motor may be removed & the pump cycled w/screw driver.

NOTE: START UP PROCEDURE MUST BE DONE IN A CLEAN ENVIRONMENT.

B. Liquid Output Adjustment:

1. Use 3/4 wrench to remove feed from body. Do not disassemble parts or allow dirt to contaminate them.
2. Use retaining ring pliers to turn black adjustment nut. Do not push on cam follower or pump may be damaged.
3. Each clockwise turn of the adjustment nut reduces output by:
.002 in³/.03 cc/.001 oz./1.78 (1/8 dia) drops.
4. Max output, per cycle, per feed, with adjustment nut flush with top of sleeve:
.009 in³/.147 cc/.005 oz./9 (1/8 dia) drops.
5. Reassemble and test. Allow sufficient time to purge all air before measuring output.

SPECIFICATIONS:

SEALS: BUNA/VITON STANDARD
OTHER MATERIALS: ALUMINUM, BRASS, DELRIN
STEEL, STAINLESS STEEL, & NYLON

- A-5930 CARTRIDGE REPLACEMENT
- A-5972 SPARE PARTS LIST
- A-5150 SEAL KIT
- A-5136 O-RING INSTALLATION TOOL

	TOLERANCES UNLESS OTHERWISE SPECIFIED FRACTIONAL ± 1/64 DECIMAL .XX ± .020 DECIMAL .XXX ± .005 DECIMAL .XXXX ± .002 ANGLES ± 1 DEG ASSEMBLIES: ALL DIMENSIONS ARE REF.	SCALE: NONE	DATE	TITLE:	DRAWING NUMBER:	REV
		DRAWN: SD	03-13-00	INSTALLATION & OPERATION INSTRUCTIONS FOR AC MOTOR OPERATED PurgeX ASS'Y B-3429	A-5973	B
		APV'D: MW	03-13-00			01-08 2002