

**PROPERTY OF OIL-RITE CORPORATION**

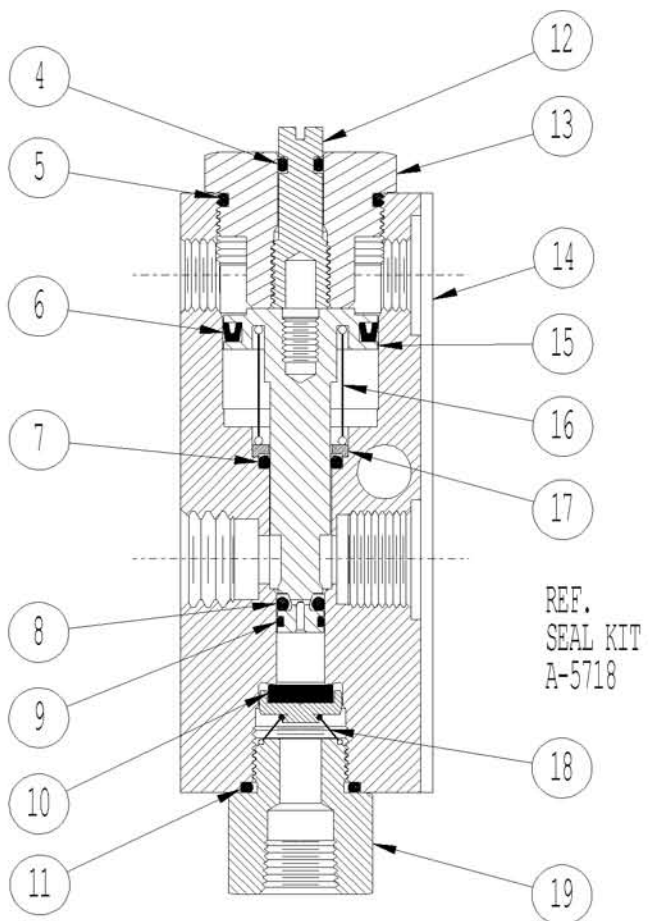
This print is loaned only and subject to return upon demand, and upon the express condition that it is not to be reproduced or copied, or information from it furnished to others, or to be used in any way detrimental to the interests of Oil-Rite Corporation.

REV	CO NO	CHANGE	BY	DATE	APVD
A	14042	ADDED SEAL KIT & PICK NOTES	RSH	12-01-04	MW
-	-	-	-	-	-
-	-	-	-	-	-

\*\* INSERT A PICK ABOVE THIS SEAL, PUSH DOWN & OUT TO REMOVE

- \* READ INSTRUCTIONS THOROUGHLY BEFORE STARTING.
- \* SEAL REPLACEMENT MUST BE PERFORMED IN A CLEAN ENVIRONMENT.
- \* DISASSEMBLE PUMP & REMOVE ALL SEALS FROM EACH COMPONENT.
  - REMOVE ITEM 13 FROM ITEM 14.
  - REMOVE ITEM 12 FROM ITEM 13.
  - ITEM 15 IS A PRECISION PART. HANDLE WITH EXTREME CARE.
  - USE A 10-32 SCREW TO PULL ITEM 15 OUT FROM ITEM 14.
  - ITEM 17 CAN NOT BE REMOVED BECAUSE IT HAS A PRESS FIT WITH ITEM 14.
  - REMOVE ITEM 19 FROM ITEM 14.
- \* DISPOSE OF USED SEALS. (ITEMS 4 THRU 11)
- \* WASH REMAINING COMPONENTS WITH MINERAL SPIRITS & ALLOW THEM TO DRY.
- \* APPLY A FILM OF OIL TO ALL REPLACEMENT SEALS BEFORE ASSEMBLY.

- \*\* -INSTALL ITEM 7 IN ITEM 14 AT ITEM 17.
- INSTALL ITEMS 6, 8, & 9 ON ITEM 15.
- INSTALL ITEM 5 ON ITEM 13.
- INSTALL ITEM 4 ON ITEM 12.
- INSTALL ITEM 12 IN ITEM 13.
- INSTALL ITEM 11 ON ITEM 19.
- SNAP ITEM 10 TO ITEM 18 AND INSTALL.
- INSTALL ITEM 19.
- INSTALL ITEM 16.
- INSTALL ITEM 15.
- INSTALL ITEM 13.



-		20
ADAPTER FITTING		19
EVAC SPRING		18
STATIONARY SEAL RETAINING RING		17
RETURN SPRING		16
PISTON		15
BODY		14
ADJUSTMENT CAP		13
LIQUID ADJUSTMENT STEM		12
1 O-RING .489 I.D. x .070 W		11
1 EVAC VALVE SUB-ASS'Y		10
1 O-RING .140 I.D. x .050 W		9
1 O-RING .125 I.D. x .070 W		8
1 O-RING .301 I.D. x .070 W		7
1 U-CUP 5/8 I.D. x 3/32 CROSS SECTION		6
1 O-RING .739 I.D. x .070 W		5
1 O-RING .114 I.D. x .070 W		4
		3
		2
		1
G1	DESCRIPTION	ITEM
QTY		

REF  
 SEAL KIT A-5718  
 INSTALLATION & OPERATION INSTRUCTIONS A-5720



TOLERANCES UNLESS OTHERWISE SPECIFIED  
 FRACTIONAL ± 1/64  
 DECIMAL .XX ± .020  
 DECIMAL .XXX ± .005  
 DECIMAL .XXXX ± .002  
 ANGLES ± 1 DEG  
 ASSEMBLES: ALL DIMENSIONS ARE REF.

SCALE: FULL  
 DRAWN: SD  
 APV'D: MW  
 DATE: 02-25-00  
 DATE: 02-25-00

TITLE:  
 SEAL REPLACEMENT INSTRUCTIONS FOR  
 AIR OPERATED PurgeX SUB-ASS'Y B-3248  
 STYLE: DG  
 PAT. NO.S 4,784,578 & 5,984,652

DRAWING NUMBER:  
**A-5970**

REV  
**A**  
 12-01  
 2004